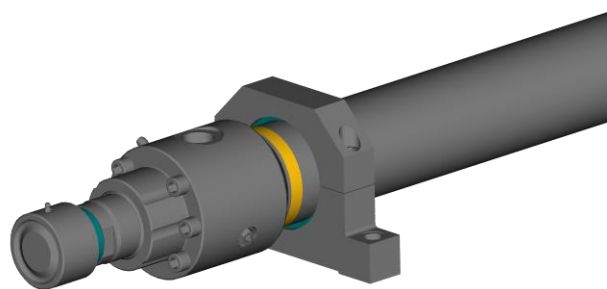


Work roll retracting cylinders

Reference list since 1983



Quantity	Dimensions (in mm) piston/rod/stroke	Hunger Drawing No.
5	300/180/5730	114 707
2	400/280/6450	115 429
2	230/160/7100	115 430
1	160/110/5150	115 815
3	190/160/7960	116 671
1	180/125/7700	117 751
3	200/140/7000	117 738
3	320/220/5520	117 743
3	320/220/6320	117 744
1	180/125/7700	117 751
1	180/125/6000	117 954
1	250/180/6013	118 876
1	200/140/7400	118 978
4	280/200/7800	119 207

1	320/220/12010	119 208
1	320/220/10210	119 211
2	220/160/6013	119 336
1	360/200/7014	119 337
2	250/180/6240	119 676
1	280/200/10510	119 719
3	250/180/6150	119 720
1	600/320/12800	120 333
2	280/200/10510	120 397
3	250/180/8540	120 401
3	280/200/9170	120 402
2	280/200/7010	120 403
1	200/140/7400	120 928
1	250/180/6013	120 930
1	400/280/9000	121 065
3	250/180/6013	121 070
1	250/180/6013	121 071
1	280/200/10510	121 110
3	250/180/6150	121 111
1	125/90/4100	121399
1	400/250/6100	121 451
1	280/200/6800	121 452
1	320/220/5350	121 471
1	340/240/8100	121 672